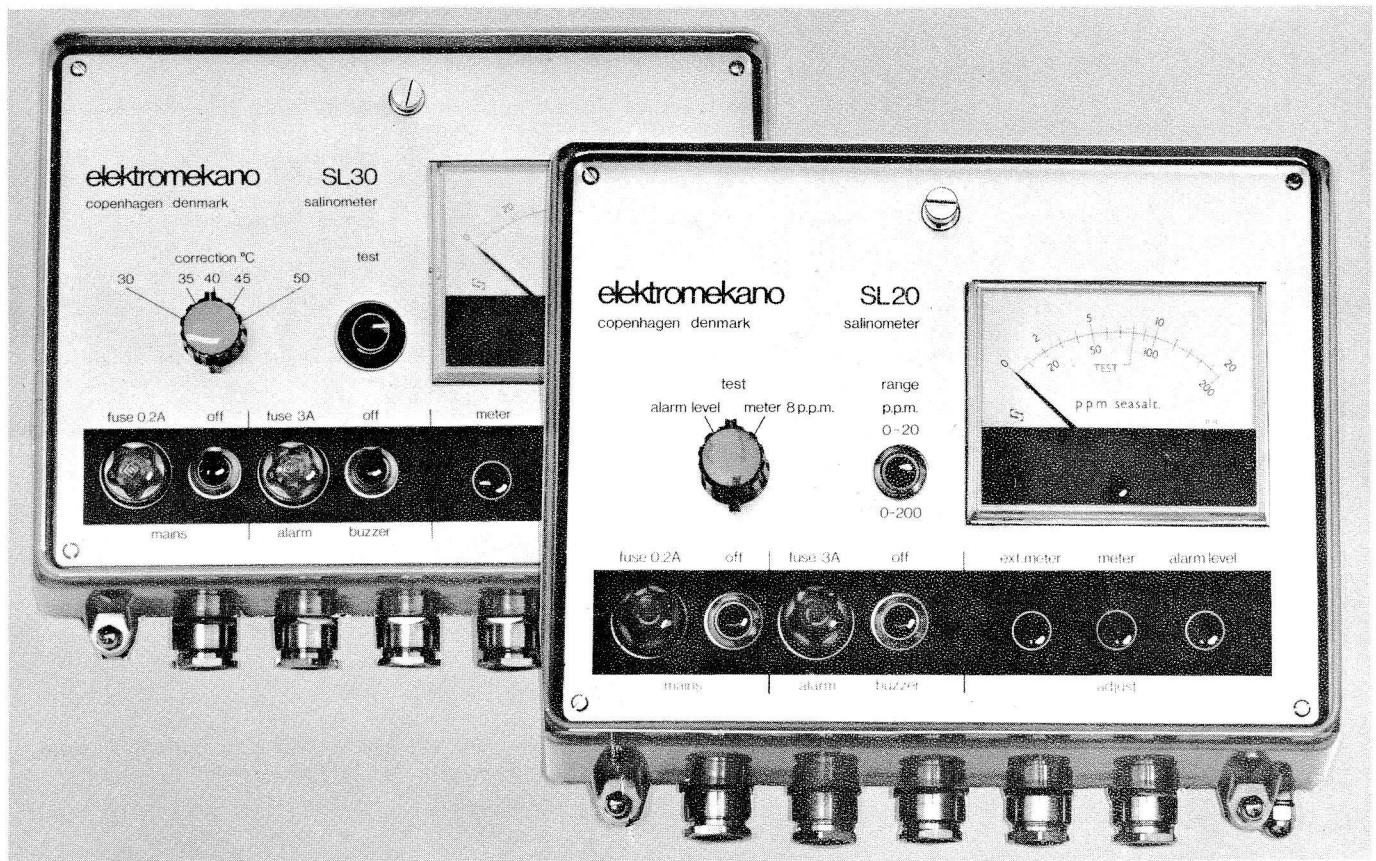


dansk radio aktieselskab



Salinometer types

elektromekano SL20 & SL30

for marine freshwater generators

Continuous check on water passing from condenser to freshwater tank

Audible and visible warning when the salinity surpasses a given value

A built-in controlling device facilitates the routine check

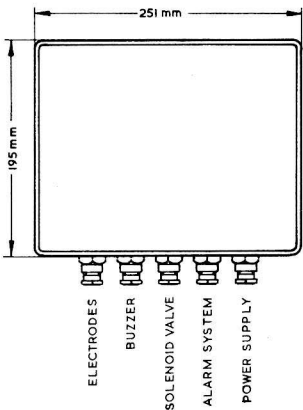
Accurate direct readings of the salinity

Automatic warning in case of internal or external failure

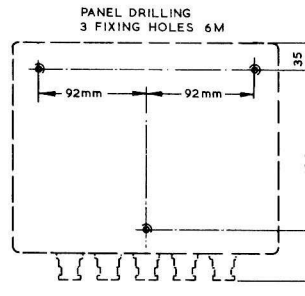
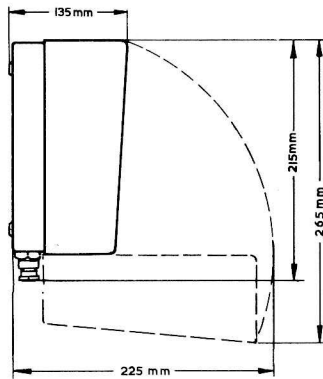
Dansk Radio Aktieselskab
33, Amaliegade, DK-1256 Copenhagen K, Denmark
telephone (01) 13 13 33
telegrams.: Dariose
telex 27058

The transistorized Salinometers Types SL 20 and SL 30 are constructed to measure and supervise the salinity of freshwater produced by distillation of sea water.

SPECIFICATIONS	SL 20	SL 30
Mains Supply:	110-127 and 220 V 50-60 Hz or D.C.	110-127 and 220 V 50-60 Hz
Power:	20-220 VA	5-240 VA
Measuring Range:	0-20 and 0-200 p.p.m. sea salt	0-200 p.p.m. sea salt
Alarm Level of Salinity:	Continuously variable 2-20 and 20-200 p.p.m.	Fixed 50 p.p.m.
Temperature Correction:	Automatic in the range 20-100°C	Manually operated in the range 30-50°C
Test:	A complete check of the salinometer can be carried out by means of a built-in test circuit.	
Adjustment:	Adjustments can easily be carried out from the front plate of the instrument.	
Cable Connections:	<ol style="list-style-type: none"> 1) Mains 2) Normally energized solenoid valve 3) Normally de-energized solenoid valve 4) Alarm buzzer (can be silenced) 5) External alarm system, normally closed contacts 6) External alarm system, normally open contacts 7) Electrode unit 8) External meter or "data logger", only SL 20 	
Failure Warning:	If connected to an external alarm system, the salinometer will give warning in case of failure of ship's mains or if a fault is present in the salinometer.	
Semiconductors:	Only silicon devices are used.	
Ambient Temperature:	0-50°C	
Electrode Unit:	The electrode unit consists of a 1 1/4" pipe size cast-brass fitting in which the rhodium-plated electrodes are mounted in such a way that they can easily be taken out for inspection.	



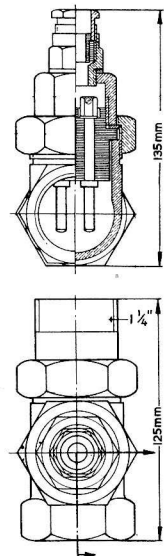
ALL CABLES 1.5 mm²



SALINOMETER WEIGHT: 3.5 kg

ELECTRODE UNIT WEIGHT: 1.2 kg

(All data are subject to possible alterations of design)



COMPLETE MARINE RADIO INSTALLATIONS ● RADIOTELEPHONE EQUIPMENT FOR SMALLER VESSELS ● MARINE RECEIVERS ● AUTO ALARMS
 DIRECTION FINDERS ● AUTOMATIC ALARM SIGNAL KEYS ● PORTABLE LIFEBOAT EQUIPMENT ● MOTOR LIFEBOAT EQUIPMENT
 SALINOMETER FOR FRESHWATER GENERATORS ● MEASURING INSTRUMENTS ● ECHO SOUNDERS FOR VERTICAL AND HORIZONTAL USE
 RADAR EQUIPMENT ● LORAN EQUIPMENT ● ANTI INTERFERENCE AERIAL EQUIPMENT FOR RADIO AND TV ● LOUDHAILER EQUIPMENT
 VHF MARINE TELEPHONE EQUIPMENT ● MAST AND ROD AERIALS ● FACSIMILE RECORDERS FOR WEATHER CHARTS. Please write for further details